

GEL SERIES-GEL Battery

463-8960(6V200AH)

Specification

Nominal Voltage	6V	
Nominal Capacity(20HR)	200.0AH	
Dimension	Length	322±3mm (12.68 inches)
	Width	178±2mm (7.01 inches)
	Container Height	226±3mm (8.90 inches)
	Total Height (with Terminal)	232±3mm (9.13 inches)
Approx Weight	Approx 31.1 kg (68.6lbs)	
Terminal	T11	
Container Material	ABS	
Rated Capacity	200.0 AH/10.0A	(20hr, 1.80V/cell, 25°C/77°F)
	185.0 AH/18.5A	(10hr, 1.75V/cell, 25°C/77°F)
	160.0 A H/32.0A	(5hr, 1.75V/cell, 25°C/77°F)
	139.2 AH/46.4A	(3hr, 1.75V/cell, 25°C/77°F)
	110.0 AH/110.0A	(1hr, 1.67V/cell, 25°C/77°F)
Max. Discharge Current	1800A (5s)	
Internal Resistance	Approx 1.68mΩ	
Operating Temp.Range	Discharge : -20~55°C (-4~131°F)	
	Charge : 0~40°C (32~104°F)	
	Storage : -20~50°C (-4~122°F)	
Nominal Operating Temp. Range	25±3°C (77±5°F)	
Cycle Use	Initial Charging Current less than 12A.	
	Voltage 7.05V~7.20V (7.05V is optimum) at 25°C(77°F).	
Standby Use	No limit on Initial Charging Current .Voltage 6.75V~6.90V (6.75V is optimum) at 25°C(77°F) . Coefficient -9 mV/°C	
	Capacity affected by Temperature	40°C (104°F) 103% 25°C (77°F) 100% 0°C (32°F) 86%
Self Discharge	GEL series batteries may be stored for up to 9 months at 25°C(77°F) and then a freshening charge is required. For higher temperatures the time interval will be shorter.	



Applications

- ◆ Telecommunications
- ◆ Solar system
- ◆ Wind power system
- ◆ Engine starting
- ◆ Wheelchair
- ◆ Floor cleaning machines
- ◆ Golf trolley
- ◆ Boats

Constant Current Discharge (Amperes) at 25 °C (77°F)

F.V/Time	20min	30min	45min	1h	2h	3h	4h	5h	6h	7h	8h	9h	10h	20h
1.85V/cell	169.2	132.8	101.3	84.8	53.8	41.0	34.0	29.3	25.3	22.4	20.2	18.5	17.5	9.60
1.80V/cell	193.8	148.4	111.7	93.6	58.2	43.9	36.0	30.8	26.6	23.5	21.2	19.4	18.2	10.0
1.75V/cell	217.8	163.2	120.8	100.2	61.7	46.4	37.7	32.0	27.5	24.3	21.9	20.0	18.5	10.2
1.70V/cell	234.6	174.8	128.3	106.0	65.4	48.3	39.0	33.0	28.5	25.1	22.5	20.5	19.0	10.3
1.67V/cell	244.2	181.6	132.8	110.0	67.1	49.9	39.9	33.7	28.9	25.5	22.9	20.8	19.3	10.4
1.60V/cell	264.6	194.4	142.7	116.8	69.8	51.9	41.4	34.7	29.6	26.0	23.3	21.2	19.6	10.6

Constant Power Discharge (Watts/cell) at 25 °C (77°F)

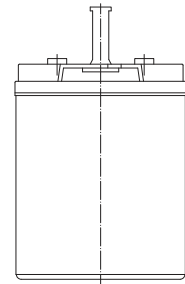
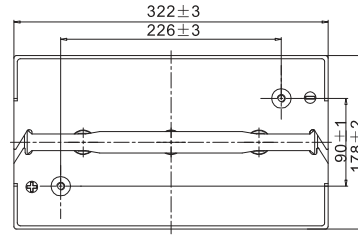
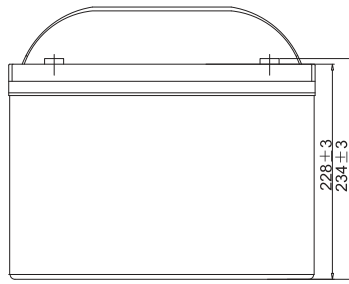
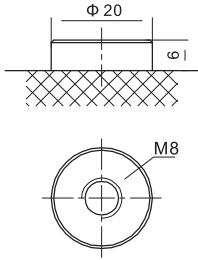
F.V/Time	20min	30min	45min	1h	2h	3h	4h	5h	6h	7h	8h	9h	10h	20h
1.85V/cell	323.8	255.9	196.5	165.1	105.1	80.3	66.8	57.9	50.1	44.5	40.2	36.8	34.8	19.2
1.80V/cell	366.1	283.3	215.1	181.3	113.3	85.8	70.5	60.6	52.4	46.4	42.0	38.6	36.3	19.9
1.75V/cell	406.9	308.7	230.8	193.1	119.6	90.4	73.6	62.7	54.1	47.9	43.3	39.7	37.0	20.3
1.70V/cell	433.5	327.8	243.3	203.1	126.2	93.9	75.9	64.5	55.9	49.4	44.5	40.7	37.8	20.5
1.67V/cell	446.2	337.0	250.2	209.6	128.8	96.4	77.5	65.7	56.7	50.0	45.1	41.1	38.2	20.7
1.60V/cell	478.1	357.3	266.8	221.3	133.4	99.8	80.2	67.5	57.8	51.0	45.8	42.0	38.9	21.0

Specifications subject to change without notice.

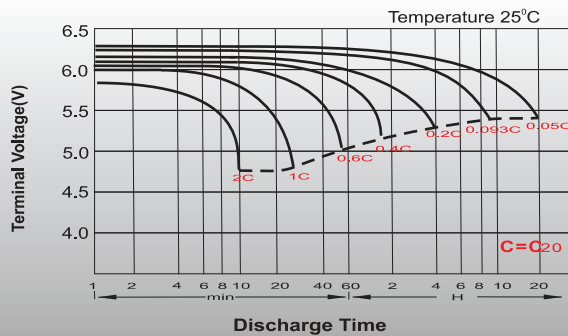
Dimensions

T11 Terminal

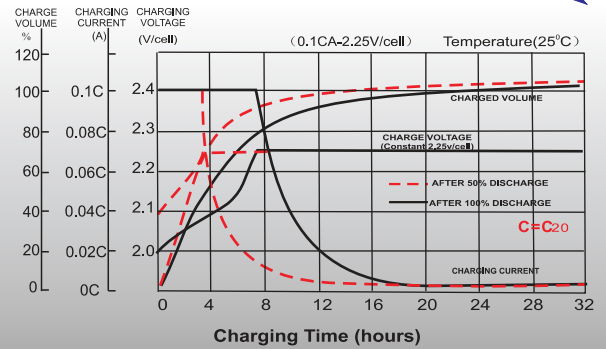
Unit: mm



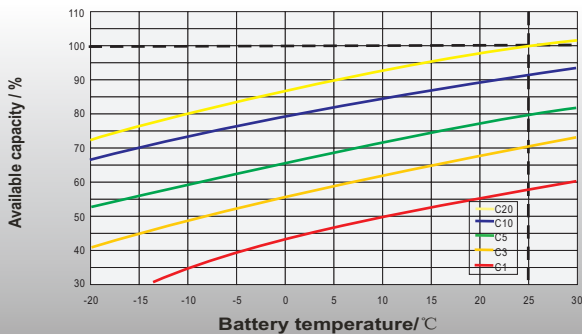
Discharge Characteristics



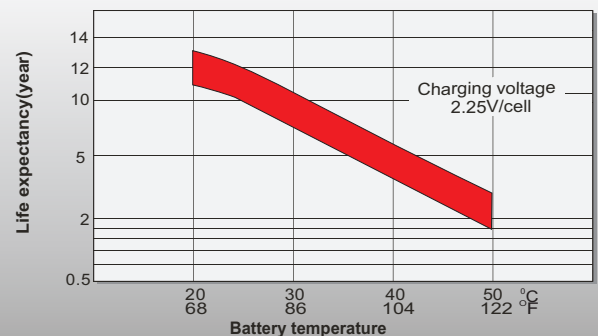
Float Charging Characteristics



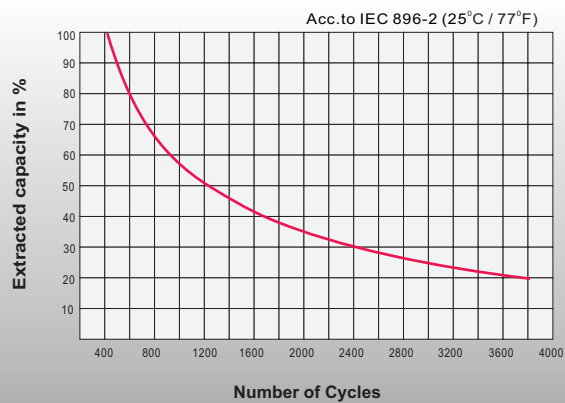
Temperature Effects in Relation to Battery Capacity



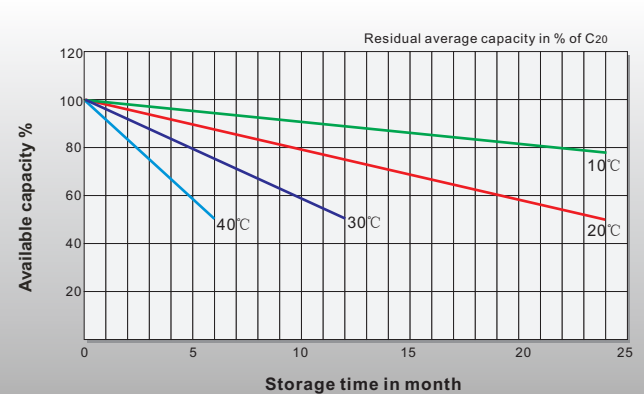
Effect of Temperature on Long Term Float Life



Cycle Life in Relation to Depth of Discharge



General Relation of Capacity VS. Storage Time



Sales Office

Sweden

Cell tech AB,
Äggelundavägen 2,175 | 2 Järfälla , Sweden
TEL: +418 445 7870
FAX: +418 445 7878
E-mail:order@celltech.se
www.celltech.se

Finland and Baltic countries

Celltech oy
Höyläämötie 11A, 00380 Helsinki,Finland
TEL: +358 (0)207 999 | 40
FAX: +358 (0)207 999 | 41
E-mail:info@celltech.fi
www.celltech.fi

Deamark

Celliech A/S
Lejrvej 25 , 3500 Vaerloese Denmark
TEL: +45 7025 2201
FAX: +45 7025 2202
E-mail:info@celliech.dk
www.celliech.dk