

### Specification

Nominal Voltage	12V	
Nominal Capacity(20HR)	33.0AH	
Dimensions	Length	195±2mm (7.68 inches)
	Width	130±2mm (5.12 inches)
	Container Height	164±2mm (6.46 inches)
	Total Height (with Terminal)	167±2mm (6.57 inches)
	Approx Weight	Approx 11.2 kg (24.7lbs)
Terminal	T6	
Container Material	ABS	
Rated Capacity	33.0 AH/1.65A	(20hr, 1.80V/cell, 25°C/77°F)
	30.7 AH/3.07A	(10hr, 1.80V/cell, 25°C/77°F)
	28.0 AH/5.59A	(5hr, 1.75V/cell, 25°C/77°F)
	24.5 AH/8.18A	(3hr, 1.75V/cell, 25°C/77°F)
	20.6AH/20.6A	(1hr, 1.60V/cell, 25°C/77°F)
Max. Discharge Current	495A (5s)	
Internal Resistance	Approx 11mΩ	
Operating Temp. Range	Discharge	-15~50°C (5~122°F)
	Charge	0~40°C (32~104°F)
	Storage	-15~40°C (5~104°F)
Nominal Operating Temp. Range	25±3°C (77±5°F)	
Cycle Use	Initial Charging Current less than 9.90A. Voltage 14.4V~15.0V at 25°C(77°F)Temp. Coefficient -30mV/°C	
	Standby Use No limit on Initial Charging Current Voltage 13.5V~13.8V at 25°C(77°F)Temp. Coefficient -20mV/°C	
Capacity affected by Temperature	40°C (104°F)	103%
	25°C (77°F)	100%
	0°C (32°F)	86%
Self Discharge	CT series batteries may be stored for up to 6 months at 25°C(77°F) and then a freshening charge is required. For higher temperatures the time interval will be shorter.	



### Applications

- ◆ All purpose
- ◆ Uninterruptable Power Supply (UPS)
- ◆ Electric Power System (EPS)
- ◆ Emergency backup power supply
- ◆ Emergency light
- ◆ Railway signal
- ◆ Aircraft signal
- ◆ Alarm and security system
- ◆ Electronic apparatus and equipment
- ◆ Communication power supply
- ◆ DC power supply
- ◆ Auto control system



### Constant Current Discharge (Amperes) at 25 °C (77°F)

F.V/Time	5min	10min	15min	20min	30min	45min	1h	2h	3h	4h	5h	6h	8h	10h	20h
1.85V/cell	62.8	41.8	34.5	30.3	24.8	19.4	16.0	9.85	7.41	6.10	5.17	4.48	3.56	2.98	1.63
1.80V/cell	75.2	50.1	40.5	34.7	27.7	21.3	17.4	10.6	7.92	6.48	5.44	4.68	3.70	3.07	1.65
1.75V/cell	90.3	57.4	45.0	38.3	29.7	22.7	18.3	11.0	8.18	6.64	5.59	4.81	3.80	3.14	1.67
1.70V/cell	104.7	64.2	49.6	41.5	31.7	23.8	19.1	11.4	8.39	6.80	5.72	4.92	3.85	3.19	1.70
1.65V/cell	115.5	69.5	53.2	44.5	33.3	24.9	19.8	11.7	8.62	6.97	5.84	5.01	3.91	3.23	1.72
1.60V/cell	127.4	75.2	57.2	46.9	35.1	25.9	20.6	12.0	8.83	7.14	5.97	5.13	4.00	3.29	1.73

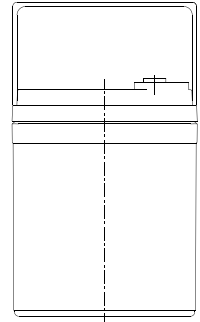
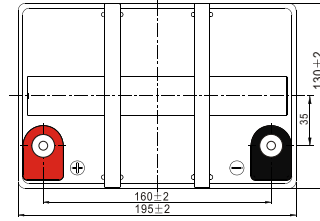
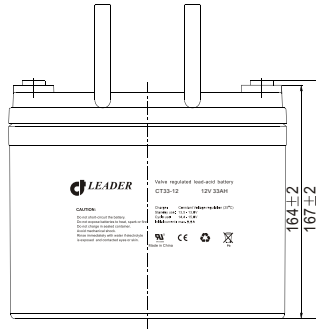
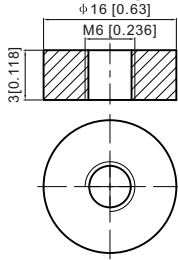
### Constant Power Discharge (Watts/cell) at 25 °C (77°F)

F.V/Time	5min	10min	15min	20min	30min	45min	1h	2h	3h	4h	5h	6h	8h	10h	20h
1.85V/cell	117.2	78.2	64.8	57.1	47.2	37.1	31.0	19.1	14.5	11.9	10.1	8.81	7.03	5.89	3.24
1.80V/cell	136.1	91.8	74.9	64.8	52.3	40.5	33.3	20.4	15.4	12.6	10.6	9.16	7.28	6.06	3.26
1.75V/cell	161.7	104.1	82.5	71.0	55.6	43.1	35.0	21.2	15.8	12.9	10.9	9.39	7.45	6.21	3.29
1.70V/cell	185.0	114.8	90.1	76.4	59.0	44.9	36.4	21.8	16.2	13.1	11.1	9.58	7.56	6.30	3.35
1.65V/cell	201.1	122.5	95.3	81.0	61.6	46.6	37.5	22.5	16.5	13.4	11.3	9.74	7.66	6.37	3.39
1.60V/cell	217.7	130.7	100.7	84.1	64.0	48.1	38.7	22.9	16.9	13.7	11.5	9.93	7.81	6.47	3.40

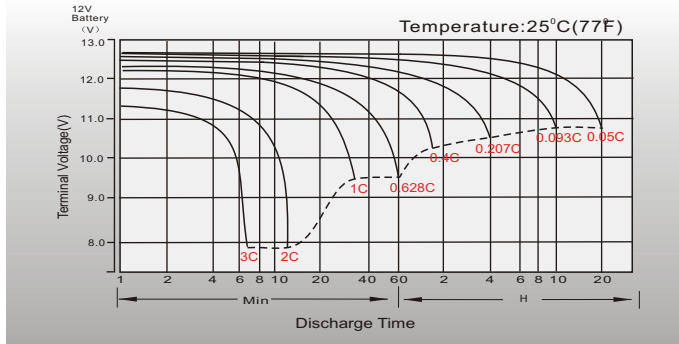
## Dimensions

### T6 Terminal

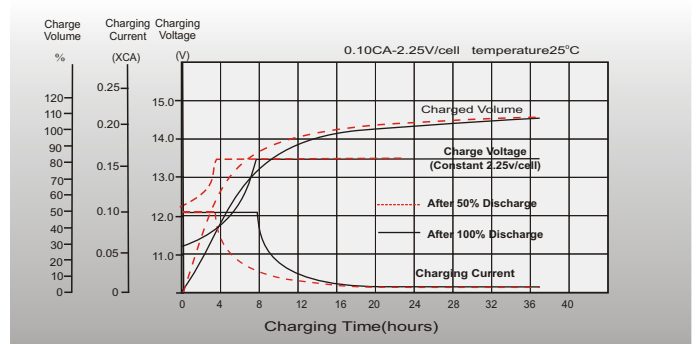
Unit: mm [inches]



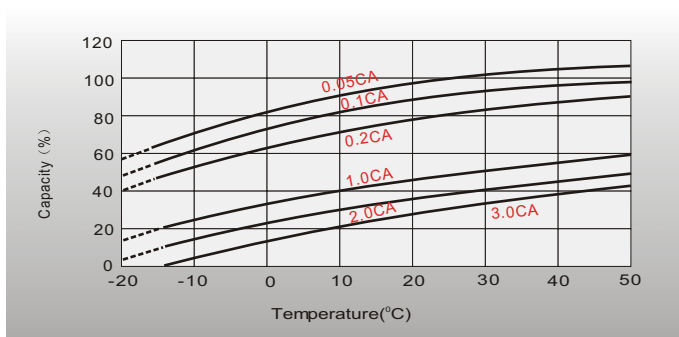
## Discharge Characteristics



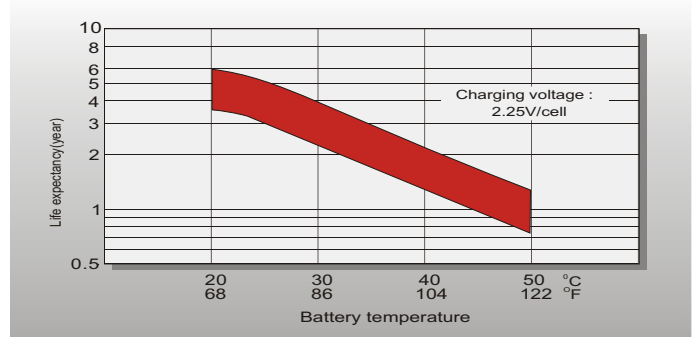
## Float Charging Characteristics



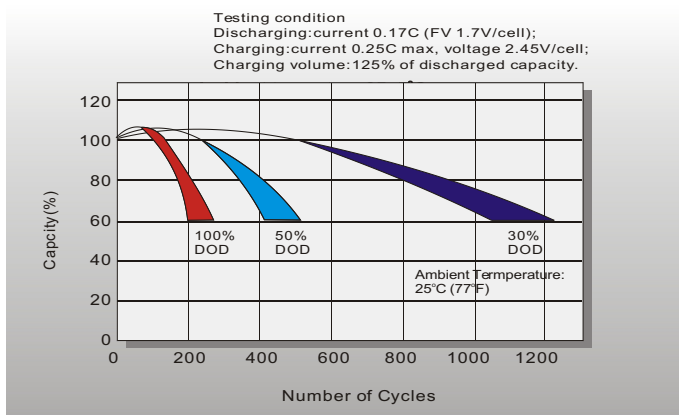
## Temperature Effects in Relation to Battery Capacity



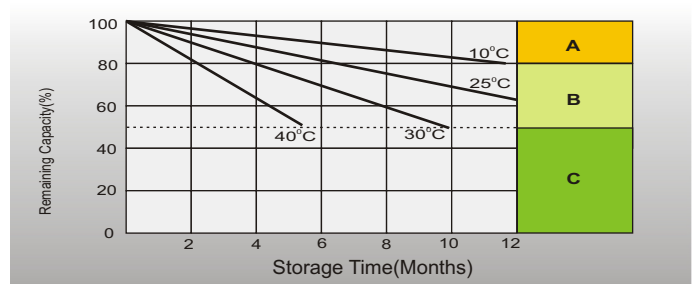
## Effect of Temperature on Long Term Float Life



## Cycle Life in Relation to Depth of Discharge



## Self Discharge Characteristics



- A** No supplementary charge required (Carry out supplementary charge before use if 100% capacity is required.)
- B** Supplementary charge required before use. Optional charging way as below:  
1. Charged for above 3 days at limited current 0.25CA and constant voltage 2.25V/cell.  
2. Charged for above 20 hours at limited current 0.25CA and constant voltage 2.45V/cell.  
3. Charged for 8-10 hours at limited current 0.05CA.
- C** Supplementary charge may often fail to recover the capacity. The battery should never be left standing till this is reached.

## Sales Office

### Sweden

Celltech AB,  
Äggelundavägen 2, 175 62 Järfälla, Sweden  
TEL: +46 8445 7870  
FAX: +46 8445 7878  
E-mail: order@celltech.se  
www.celltech.se

### Finland and Baltic countries

Celltech Oy  
Höylätamitie 11A, 00380 Helsinki, Finland  
TEL: +358 (0)207 999 640  
FAX: +358 (0)207 999 641  
E-mail: info@celltech.fi  
www.celltech.fi

### Denmark

Celltech A/S  
Rugmarken 9B, 3520 Farum, Denmark  
TEL: +45 7025 2201  
FAX: +45 7025 2202  
E-mail: info@celltech.dk  
www.celltech.dk