

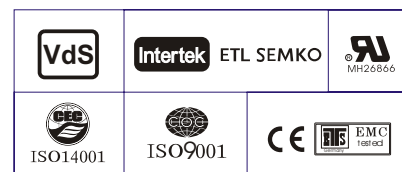
### Specification

Nominal Voltage	6V	
Nominal Capacity(20HR)	1.3AH	
Dimensions	Length	97 ± 1mm (3.82 inches)
	Width	24 ± 1mm (0.94 inches)
	Container Height	51.5 ± 1mm (2.03 inches)
	Total Height (with Terminal)	57.5 ± 1mm (2.26 inches)
	Approx Weight	Approx 0.29 kg (0.64lbs)
Terminal	T1	
Container Material	ABS	
Rated Capacity	1.30 AH/0.065A	(20hr, 1.80V/cell, 25°C/77°F)
	1.21 AH/0.121A	(10hr, 1.80V/cell, 25°C/77°F)
	1.10 AH/0.220A	(5hr, 1.75V/cell, 25°C/77°F)
	0.966AH/0.322A	(3hr, 1.75V/cell, 25°C/77°F)
	0.811 AH/0.811A	(1hr, 1.60V/cell, 25°C/77°F)
Max. Discharge Current	19.5A (5s)	
Internal Resistance	Approx 65mΩ	
Operating Temp. Range	Discharge	-15~50°C (5~122°F)
	Charge	0~40°C (32~104°F)
	Storage	-15~40°C (5~104°F)
Nominal Operating Temp. Range	25 ± 3°C (77 ± 5°F)	
Cycle Use	Initial Charging Current less than 0.39A. Voltage 7.2V~7.5V at 25°C(77°F)Temp. Coefficient -15mV/°C	
	Standby Use No limit on Initial Charging Current Voltage 6.75V~6.9V at 25°C(77°F)Temp. Coefficient -10mV/°C	
Capacity affected by Temperature	40°C (104°F)	103%
	25°C (77°F)	100%
	0°C (32°F)	86%
Self Discharge	CT series batteries may be stored for up to 6 months at 25°C(77°F) and then a freshening charge is required. For higher temperatures the time interval will be shorter.	



### Applications

- ◆ All purpose
- ◆ Uninterruptable Power Supply (UPS)
- ◆ Electric Power System (EPS)
- ◆ Emergency backup power supply
- ◆ Emergency light
- ◆ Railway signal
- ◆ Aircraft signal
- ◆ Alarm and security system
- ◆ Electronic apparatus and equipment
- ◆ Communication power supply
- ◆ DC power supply
- ◆ Auto control system



### Constant Current Discharge (Amperes) at 25 °C (77°F)

F.V/Time	5min	10min	15min	20min	30min	45min	1h	2h	3h	4h	5h	6h	8h	10h	20h
1.85V/cell	2.48	1.65	1.36	1.19	0.978	0.763	0.632	0.388	0.292	0.240	0.204	0.177	0.140	0.117	0.064
1.80V/cell	2.96	1.97	1.60	1.37	1.09	0.837	0.684	0.416	0.312	0.255	0.214	0.184	0.146	0.121	0.065
1.75V/cell	3.56	2.26	1.77	1.51	1.17	0.896	0.723	0.434	0.322	0.262	0.220	0.190	0.150	0.124	0.066
1.70V/cell	4.13	2.53	1.96	1.63	1.25	0.939	0.754	0.449	0.331	0.268	0.225	0.194	0.152	0.126	0.067
1.65V/cell	4.55	2.74	2.10	1.75	1.31	0.981	0.780	0.463	0.340	0.275	0.230	0.197	0.154	0.127	0.068
1.60V/cell	5.02	2.96	2.25	1.85	1.38	1.02	0.811	0.475	0.348	0.281	0.235	0.202	0.158	0.130	0.068

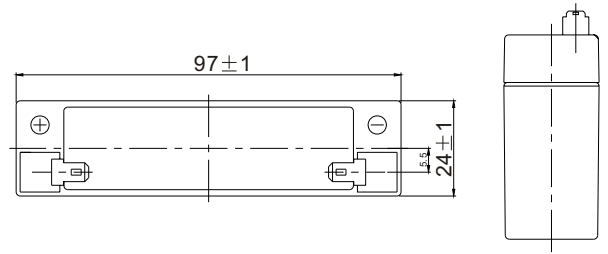
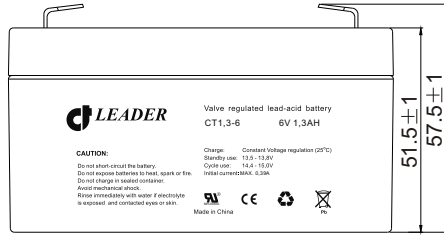
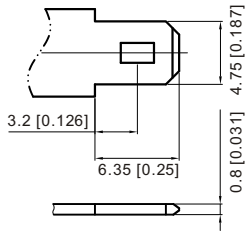
### Constant Power Discharge (Watts) at 25 °C (77°F)

F.V/Time	5min	10min	15min	20min	30min	45min	1h	2h	3h	4h	5h	6h	8h	10h	20h
1.85V/cell	4.62	3.08	2.55	2.25	1.86	1.46	1.22	0.754	0.569	0.470	0.400	0.347	0.277	0.232	0.127
1.80V/cell	5.36	3.62	2.95	2.55	2.06	1.59	1.31	0.802	0.605	0.497	0.418	0.361	0.287	0.239	0.129
1.75V/cell	6.37	4.10	3.25	2.80	2.19	1.70	1.38	0.833	0.622	0.507	0.428	0.370	0.294	0.244	0.130
1.70V/cell	7.29	4.52	3.55	3.01	2.32	1.77	1.44	0.860	0.637	0.518	0.437	0.378	0.298	0.248	0.132
1.65V/cell	7.92	4.83	3.76	3.19	2.43	1.84	1.48	0.885	0.652	0.529	0.445	0.384	0.302	0.251	0.134
1.60V/cell	8.58	5.15	3.97	3.31	2.52	1.89	1.53	0.903	0.665	0.541	0.453	0.391	0.308	0.255	0.134

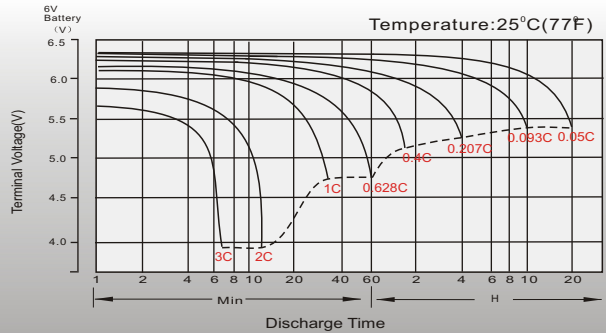
# Dimensions

## T1 Terminal

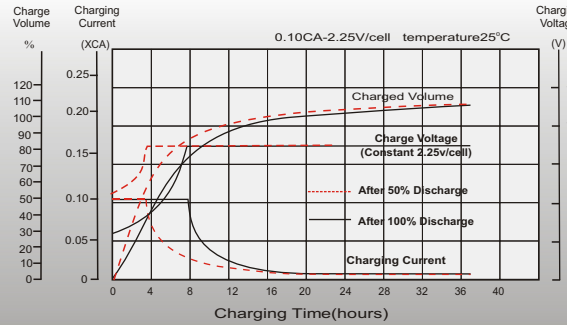
Unit: mm [inches]



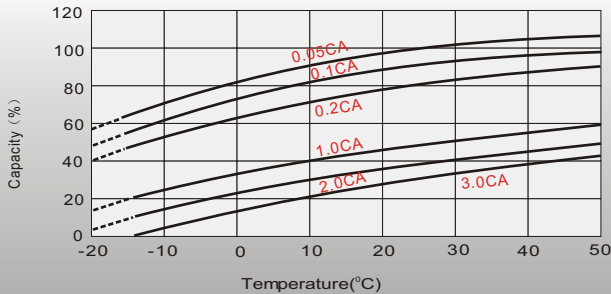
## Discharge Characteristics



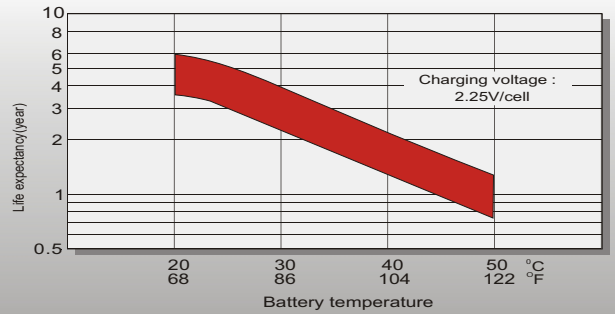
## Float Charging Characteristics



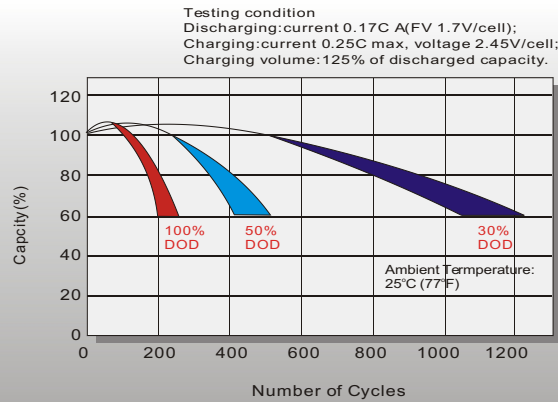
## Temperature Effects in Relation to Battery Capacity



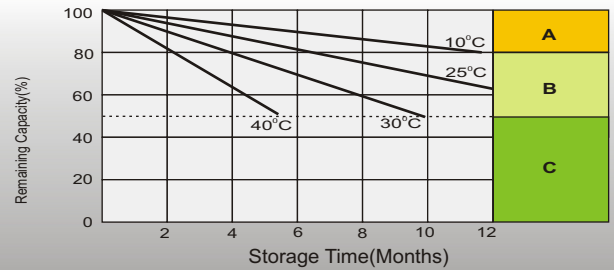
## Effect of Temperature on Long Term Float Life



## Cycle Life in Relation to Depth of Discharge



## Self Discharge Characteristics



- A** No supplementary charge required (Carry out supplementary charge before use if 100% capacity is required.)
- B** Supplementary charge required before use. Optional charging way as below:  
1. Charged for above 3 days at limited current 0.25CA and constant voltage 2.25V/cell.  
2. Charged for above 20 hours at limited current 0.25CA and constant voltage 2.45V/cell.  
3. Charged for 8-10 hours at limited current 0.05CA.
- C** Supplementary charge may often fail to recover the capacity. The battery should never be left standing till this is reached.

## Sales Office

### Sweden

Celltech AB,  
 Äggelundavägen 2, 175 62 Järfälla, Sweden  
 TEL: +46 8445 7870  
 FAX: +46 8445 7878  
 E-mail: order@celltech.se  
 www.celltech.se

### Finland and Baltic countries

Celltech Oy  
 Höylätamitie 11A, 00380 Helsinki, Finland  
 TEL: +358 (0)207 999 640  
 FAX: +358 (0)207 999 641  
 E-mail: info@celltech.fi  
 www.celltech.fi

### Denmark

Celltech A/S  
 Rugmarken 9B, 3520 Farum, Denmark  
 TEL: +45 7025 2201  
 FAX: +45 7025 2202  
 E-mail: info@celltech.dk  
 www.celltech.dk