

EV12-55

12V 55Ah(10hr)

The rechargeable batteries are lead-lead dioxide systems. The dilute sulfuric acid electrolyte is absorbed by separators and plates and thus immobilized. Should the battery be accidentally overcharged producing hydrogen and oxygen, special one-way valves allow the gases to escape thus avoiding excessive pressure build-up. Otherwise, the battery is completely sealed and is, therefore, maintenance-free, leak proof and usable in any position.

Battery Construction

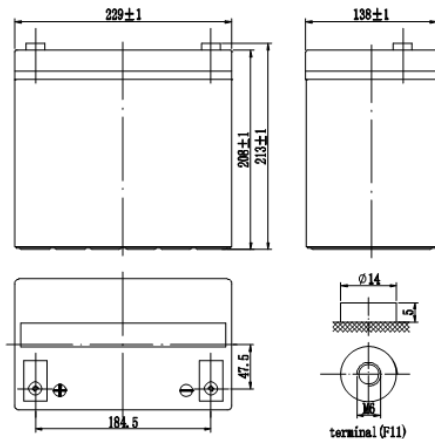
Component	Positive plate	Negative plate	Container	Cover	Safety valve	Terminal	Separator	Electrolyte
Raw material	Lead dioxide	Lead	ABS	ABS	Rubber	Copper	Fiberglass	Sulfuric acid

General Features

- Absorbent Glass Mat (AGM) technology for efficient gas recombination of up to 99% and freedom from electrolyte maintenance or water adding.
- Not restricted for air transport-complies with IATA/ICAO Special Provision A67.
- UL-recognized component.
- Can be mounted in any orientation.
- Computer designed lead, calcium tin alloy grid for high power density.
- Long service life, float or cyclic applications.
- Maintenance-free operation.
- Low self discharge.

Dimensions and Weight

Length(mm / inch)	229.0 / 9.02
Width(mm / inch)	138.0 / 5.43
Height(mm / inch)	208.0 / 8.19
Total Height(mm / inch)	213.0 / 8.39
Approx. Weight(Kg / lbs)	17.0 / 37.48



Performance Characteristics

Nominal Voltage	12V
Number of cell	6
Design Life	10 years
Nominal Capacity 77°F(25°C)	
10 hour rate (5.50A, 10.8V)	55Ah
5 hour rate (9.27A, 10.8V)	46.35Ah
1 hour rate (32.03A, 10.5V)	32.03Ah
Internal Resistance	
Fully Charged battery 77°F(25°C)	≤ 7.0mOhms
Self-Discharge	
3% of capacity declined per month at 25 °C (average)	
Operating Temperature Range	
Discharge	-20~60°C
Charge	-10~55°C
Storage	-10~50°C
Max. Discharge Current 77°F(25°C)	550A(5s)
Short Circuit Current	1400A
Charge Methods: Constant Voltage Charge 77°F(25 °C)	
Cycle use	2.40-2.45VPC
Maximum charging current	16.5A
Temperature compensation	-30mV/°C
Standby use	2.20-2.30VPC
Temperature compensation	-20mV/°C

Discharge Constant Current (Amperes at 77 °F25 °C)

End Point Volts/Cell	5min	10min	15min	30min	1h	3h	5h	10h	20h
1.60V	189.0	139.0	103.8	60.1	34.74	15.15	10.11	5.90	3.00
1.65V	182.1	134.4	100.7	58.9	34.09	14.91	9.98	5.84	2.97
1.70V	172.9	128.3	96.6	57.2	33.22	14.60	9.81	5.76	2.93
1.75V	160.8	120.3	91.1	54.9	32.03	14.18	9.58	5.66	2.88
1.80V	144.7	109.4	83.7	51.8	30.40	13.59	9.27	5.50	2.81

Discharge Constant Power (Watts at 77 ° F25 °C)

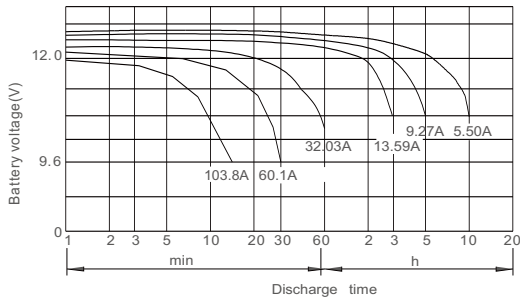
End Point Volts/Cell	5min	10min	15min	30min	1h	2h	3h	5h	10h
1.60V	321	236	181	110	65.0	38.5	28.9	19.5	11.6
1.65V	317	234	179	109	64.5	38.2	28.6	19.3	11.5
1.70V	304	226	174	106	63.0	37.4	28.1	19.0	11.4
1.75V	288	216	167	103	61.0	36.3	27.4	18.7	11.2
1.80V	264	200	155	98	58.2	34.9	26.4	18.1	10.9

(Note)The above characteristics data are average values obtained within three charge/discharge cycles not the minimum values.

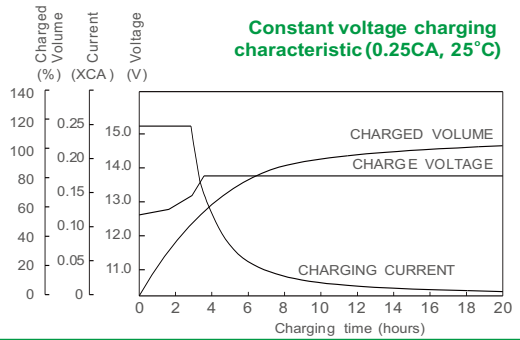
EV12-55

12V 55Ah(10hr)

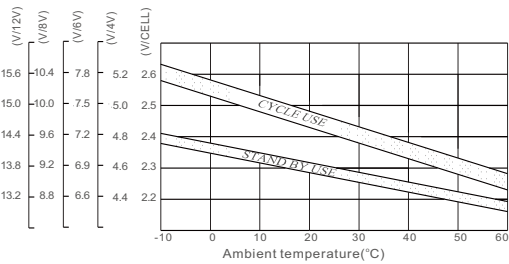
Discharge characteristic (25°C)



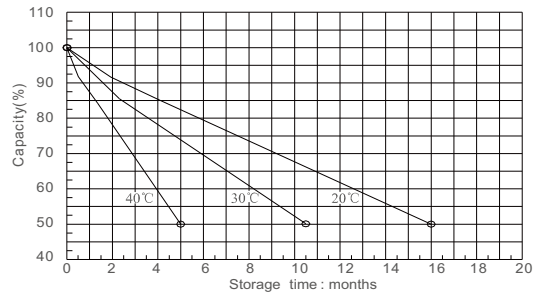
Constant voltage charging characteristic (0.25CA, 25°C)



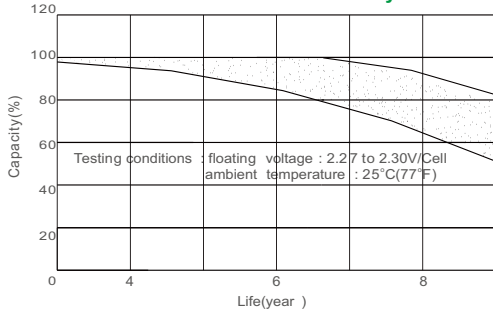
Relationship between charging voltage and temperature



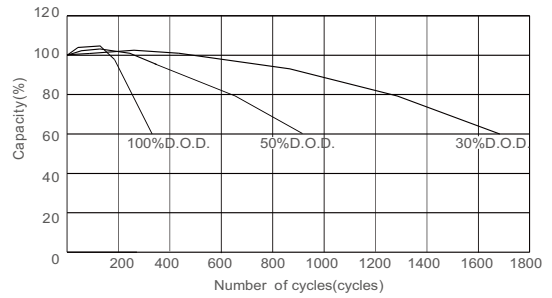
Self-discharge characteristic



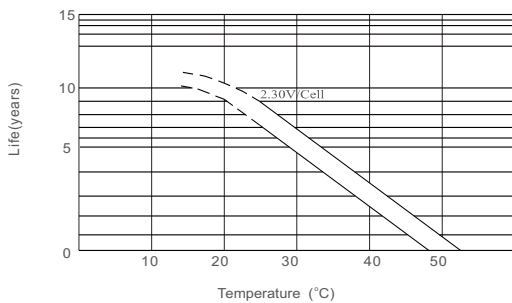
Life characteristics of Standby use



Cycle service life in relation to depth of discharge



Temperature effects on float life



Temperature effects on capacity

