

### Specification

Code:460-8630

Nominal Voltage	12V
Watts(15min Rate)	370.3Watts at 1.67V/cell
Dimension	Length 305±1mm ( 12.0inches)
	Width 168±1mm (6.61 inches)
	Container Height 207±2mm (8.15 inches)
	Total Height (with Terminal) 210±2mm (8.27 inches)
Approx Weight	Approx 27.4kg (60.4lbs)
Terminal	T6
Container Material	ABS
Rated Capacity	90.7AH/9.07 A (10hr , 1.80V/cell,25°C/77°F)
	89.6AH/11.2A (8hr, 1.75V/cell,25°C/77°F)
	83.5AH/16.7 A (5hr, 1.75V/cell,25°C/77°F)
	77.1AH /25.7A (3hr, 1.75V/cell,25°C/77°F)
	67.5AH/67.5A (1hr, 1.60V/cell,25°C/77°F)
Max. Discharge Current	1425A(5s)
Internal Resistance	Approx 4mΩ
Operating Temp.Range	Discharge : -15~50°C (5~122°F)
	Charge : 0~40°C (32~104°F)
	Storage : -15~40°C (5~104°F)
Nominal Operating Temp. Range	25±3°C (77±5°F)
Cycle Use	Initial Charging Current less than28.5A.Voltage 14.4V~15.0V at 25°C(77°F)Temp. Coefficient -30mV/°C
	No limit on Initial Charging Current Voltage 13.5V~13.8V at 25°C(77°F)Temp. Coefficient -20mV/°C
Capacity affected by Temperature	40°C (104°F) 103%
	25°C (77°F) 100%
	0°C (32°F) 86%
Self Discharge	CT series batteries may be stored for up to 6 months at 25°C(77°F) and then a freshening charge is required. For higher temperatures the time interval will be shorter.



### Applications

- ◆ UPS (High rate)
- ◆ High power backup supply
- ◆ Emergency power supply
- ◆ Emergency lighting
- ◆ Electric starting

### Constant Current Discharge (Amperes) at 25 °C (77°F)


### Constant Power Discharge (Watts/Cell) at 25 °C (77°F)

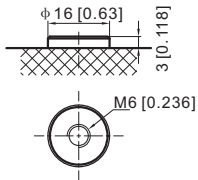
F.V/Time	5min	10min	15min	20min	30min	45min	1h	2h	3h	4h	5h	6h	8h	10h	20h
1.85V/cell	209.8	171.1	145.5	123.1	95.0	69.9	56.5	33.7	24.4	19.1	15.8	13.6	10.7	8.84	4.63
1.80V/cell	234.8	190.7	158.5	133.1	100.7	73.4	59.2	35.0	25.1	19.8	16.3	14.0	10.9	9.07	4.75
1.75V/cell	262.2	209.2	171.4	142.2	105.8	76.7	61.6	35.8	25.7	20.1	16.7	14.3	11.2	9.25	4.86
1.70V/cell	290.7	226.9	182.4	151.3	111.2	80.1	63.5	36.6	26.2	20.6	17.1	14.6	11.4	9.43	4.94
1.67V/cell	321.5	242.8	195.3	159.6	116.5	82.8	65.3	37.3	26.7	21.0	17.3	14.9	11.6	9.59	5.03
1.60V/cell	348.8	258.8	205.6	166.7	120.4	85.8	67.5	38.3	27.2	21.4	17.7	15.2	11.9	9.76	5.16

Specifications subject to change without notice.

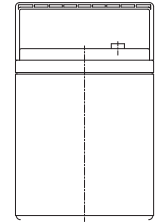
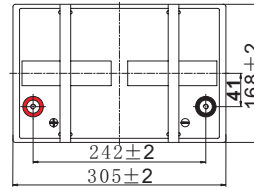
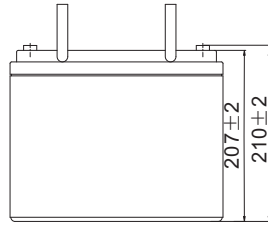
# Dimensions

## T6 Terminal

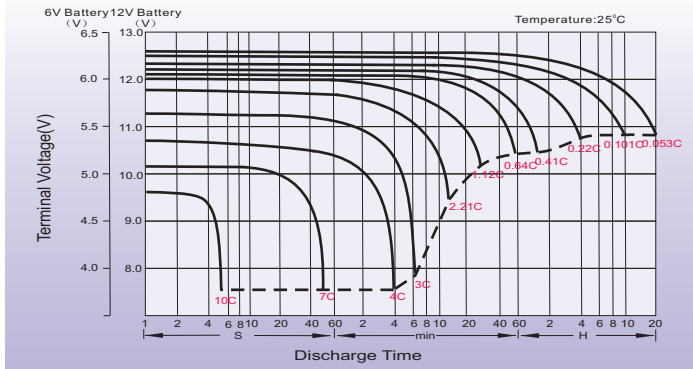
Unit: mm [inches]



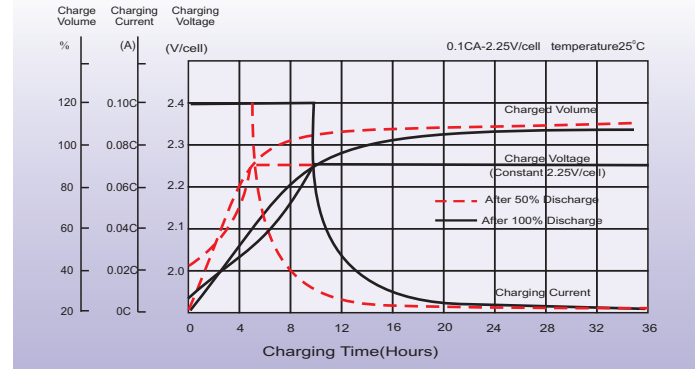
Unit: mm [inches]



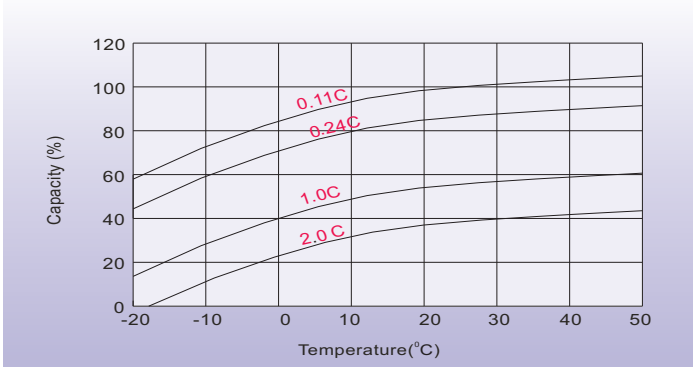
## Discharge Characteristics



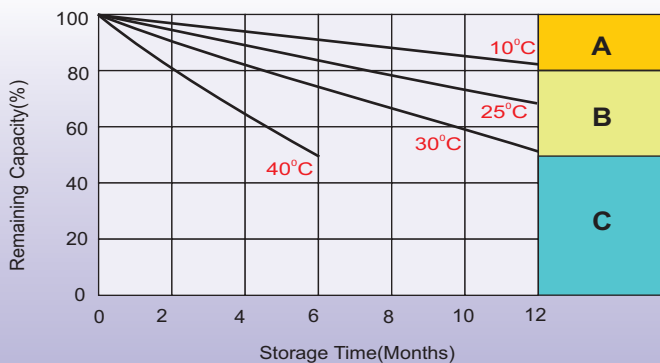
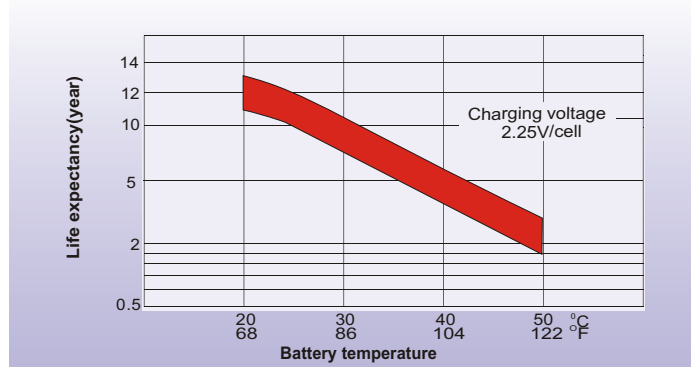
## Float Charging Characteristics



## Temperature Effects in Relation to Battery Capacity



## Effect of Temperature on Long Term Float Life



## Self Discharge Characteristics

- A** No supplementary charge required  
(Carry out supplementary charge before use if 100% capacity is required.)
- B** Supplementary charge required before use. Optional charging way as below:
  1. Charged for above 3 days at limited current 0.25CA and constant voltage 2.25V/cell.
  2. Charged for above 20 hours at limited current 0.25CA and constant voltage 2.45V/cell.
  3. Charged for 8-10 hours at limited current 0.05CA.
- C** Supplementary charge may often fail to recover the capacity.  
The battery should never be left standing till this is reached.

## Sales Office

**Finland and Baltics**  
Celltech Oy  
Sinimäentie 6  
02630 Espoo  
Finland  
TEL: +358 (0) 207 999 640  
E-mail: info@celltech.fi  
www.celltech.fi

**Sweden**  
Celltech Abatel AB  
Färögatan 33  
164 51 Kista,  
Sweden  
TEL: +46 (0) 8 445 78 70  
E-mail: info@celltech.se  
www.celltech.se

**Denmark**  
Celltech A/S  
Lejrvej 25  
3500 Vaerloese,  
Denmark  
TEL: +45 7025 2201  
E-mail: info@celltech.dk  
www.celltech.dk

**Norway**  
Staubo Elektro-Maskin AS  
Bjoernerudveien 12 C  
1266 Oslo  
Norway  
TEL: +47 22 75 35 00  
E-Mail: post@staubo.no  
www.staubo.no