

Specification

Code:460-6245

Nominal Voltage	12V	
Rated Capacity	200.0Ah (C ₁₀ , 1.80V/cell)	
Dimension	Length	560±2mm (22.05 inches)
	Width	125±2mm (4.92 inches)
	Container Height	320±2mm (12.60 inches)
	Total Height (with Terminal)	320±2mm (12.60 inches)
Approx Weight	Approx 59.5Kg (131.1 lbs)	
Terminal	T11	
Container Material	ABS	
Capacity(25°C/77°F)	210.0 Ah	(20hr, 10.5A, 1.80V/cell)
	200.0 Ah	(10hr, 20.0A, 1.80V/cell)
	188.8 Ah	(8hr, 23.6A, 1.80V/cell)
	173.0 Ah	(5hr, 34.6A, 1.75V/cell)
	129.2 Ah	(1hr, 129.2A, 1.67V/cell)
Max. Discharge Current	1600A (5s)	
Internal Resistance	Approx 3.0mΩ	
Operating Temp. Range	Discharge : -15~50°C (5~122°F)	
	Charge : 0~40°C (32~104°F)	
	Storage : -15~40°C (5~104°F)	
Nominal Operating Temp. Range	2±53°C (77±5°F)	
Boost Charge	Initial Charging Current less than 60.0A. Voltage 14.1V~14.4V at 25°C(77°F)Temp. Coefficient -30mV/°C	
Standby Use	No limit on Initial Charging Current Voltage 13.5V~13.8V at 25°C(77°F)Temp. Coefficient -20mV/°C	
Capacity affected by Temperature	40°C (104°F)	103%
	25°C (77°F)	100%
	0°C (32°F)	86%
Self Discharge (3%/month)	CT series batteries may be stored for up to 6 months at 25°C(77°F) and then a freshening charge is required. For higher temperatures the time interval will be shorter.	



Applications

- ◆ For standard 19 inches or 23 inches power cabinets
- ◆ Network connection equipment of communication system
- ◆ Power system of special network or local area network
- ◆ UPS, standby power supply
- ◆ Power station systems
- ◆ Railway and marine systems



Constant Current Discharge (Amperes) at 25 °C (77°F)

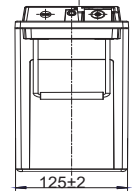
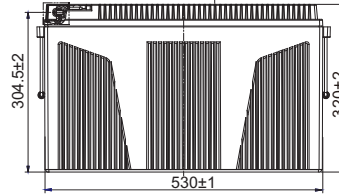
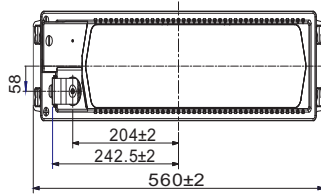
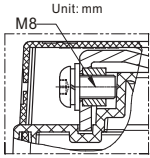
F.V/Time	10min	15min	20min	30min	45min	1h	2h	3h	4h	5h	6h	8h	10h	20h
1.85V/cell	5; : 18	252.9	226.7	185.7	143.2	115.7	67.5	49.4	39.6	33.2	28.7	22.8	19.0	10.1
1.80V/cell	334.0	291.9	252.9	199.6	151.4	121.1	69.9	51.2	40.8	34.2	29.5	23.6	20.0	10.5
1.75V/cell	368.6	314.2	269.6	207.6	156.1	124.7	71.5	52.0	41.3	34.6	29.9	24.0	20.1	10.6
1.70V/cell	392.5	329.3	280.4	214.7	159.1	126.7	72.5	52.7	41.9	34.9	30.3	24.3	20.3	10.7
1.67V/cell	410.4	340.4	286.3	219.1	162.5	129.2	73.5	53.1	42.3	35.4	30.6	24.5	20.5	10.8
1.60V/cell	428.3	349.9	294.7	223.5	164.9	131.2	74.4	53.8	42.7	35.7	30.9	24.8	20.7	10.8

Constant Power Discharge (Watts/cell) at 25 °C (77°F)

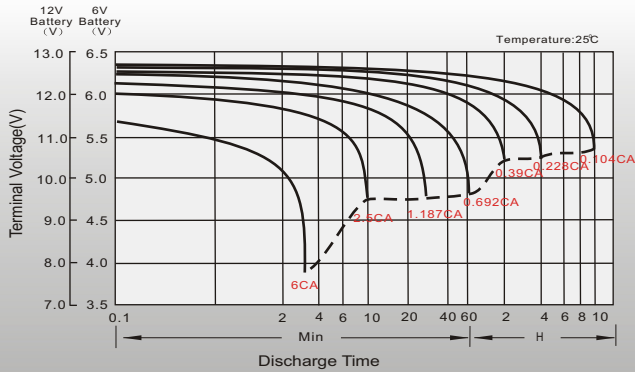
F.V/Time	10min	15min	20min	30min	45min	1h	2h	3h	4h	5h	6h	8h	10h	20h
1.85V/cell	869.1	477.0	431.8	357.7	278.0	225.5	132.4	97.2	78.2	65.8	57.1	45.5	38.0	20.2
1.80V/cell	616.5	543.2	474.8	378.7	291.7	234.7	136.2	100.2	80.2	67.3	58.3	47.0	39.7	21.0
1.75V/cell	669.5	577.5	501.3	390.5	298.1	240.6	138.8	101.4	80.9	68.0	59.0	47.6	40.1	21.2
1.70V/cell	696.9	597.0	517.4	401.8	302.5	243.6	140.4	102.6	81.9	68.4	59.7	48.1	40.5	21.3
1.67V/cell	725.8	614.6	526.3	409.1	308.1	248.0	142.2	103.2	82.6	69.3	60.1	48.5	40.8	21.4
1.60V/cell	736.6	619.3	534.0	411.9	309.2	249.3	142.6	103.8	82.9	69.6	60.4	48.9	41.1	21.5

Dimensions

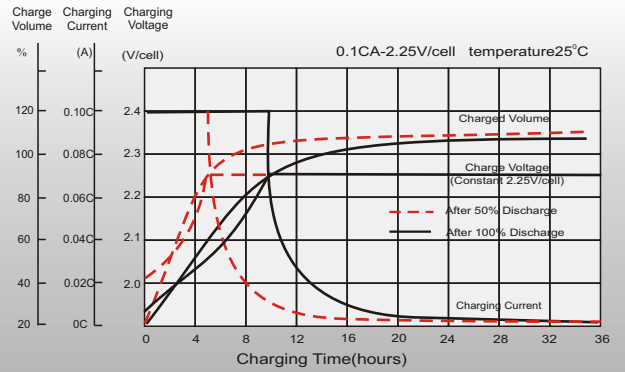
T11 Terminal



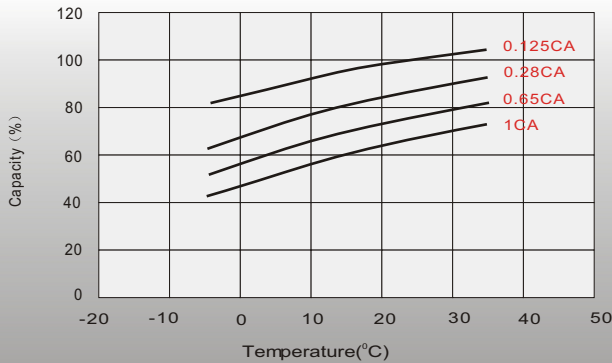
Discharge Characteristics



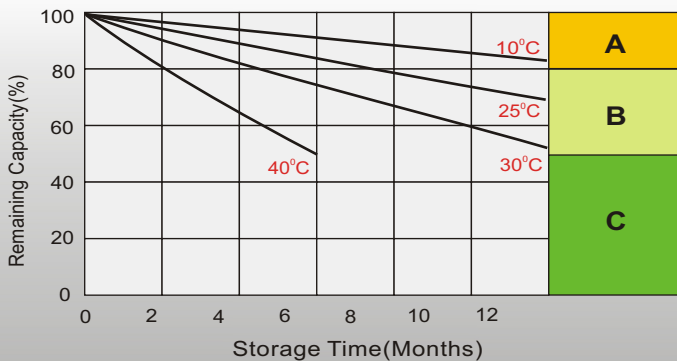
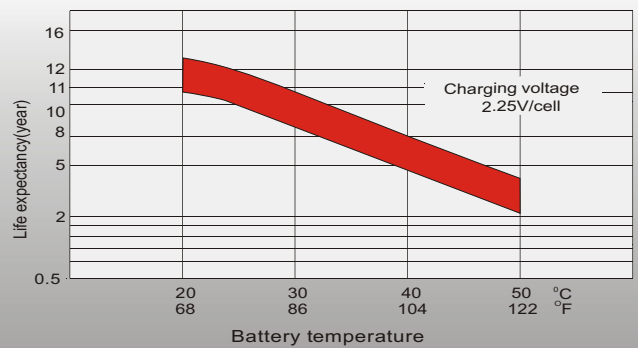
Float Charging Characteristics



Temperature Effects in Relation to Battery Capacity



Effect of Temperature on Long Term Float Life



Self Discharge Characteristics

- A** No supplementary charge required
(Carry out supplementary charge before use if 100% capacity is required.)
- B** Supplementary charge required before use. Optional charging way as below:
 1. Charged for above 3 days at limited current 0.25CA and constant volatge 2.25V/cell.
 2. Charged for above 20hours at limited current 0.25CA and constant volatge 2.45V/cell.
 3. Charged for 8-10hours at limited current 0.05CA .
- C** Supplementary charge may often fail to recover the capacity.
The battery should never be left standing till this is reached.

Sales Office

Finland and Baltics
Celltech Oy
Sinimäentie 6
02630 Espoo
Finland
TEL: +358 (0) 207 999 640
E-mail: info@celltech.fi
www.celltech.fi

Sweden
Celltech Abatel AB
Färögatan 33
164 51 Kista,
Sweden
TEL: +46 (0) 8 445 78 70
E-mail: info@celltech.se
www.celltech.se

Denmark
Celltech A/S
Lejrvej 25
3500 Vaerloese,
Denmark
TEL: +45 7025 2201
E-mail: info@celltech.dk
www.celltech.dk

Norway
Staubo Elektro-Maskin AS
Bjoernerudveien 12 C
1266 Oslo
Norway
TEL: +47 22 75 35 00
E-Mail: post@staubo.no
www.staubo.no