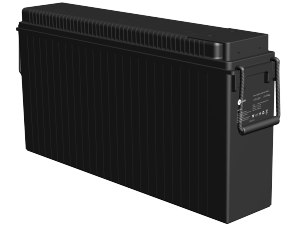


Specification

Code:460-6235

Nominal Voltage	12V	
Nominal Capacity(10HR)	150.0AH	
Dimension	Length	545±3mm (21.5 inches)
	Width	110±2mm (4.33 inches)
	Container Height	280±3mm (11.02 inches)
	Total Height (with Terminal)	280±3mm (11.02 inches)
Approx Weight	Approx 46.0 Kg (101.4 lbs)	
Terminal	T13-A	
Container Material	ABS	
Rated Capacity	158.8 AH/7.94A	(20hr, 1.80V/cell, 25°C/77°F)
	150.0 AH/15.0A	(10hr, 1.80V/cell, 25°C/77°F)
	142.4 AH/17.8A	(8hr, 1.80V/cell, 25°C/77°F)
	130.5 AH/26.1A	(5hr, 1.75V/cell, 25°C/77°F)
	97.5 AH/97.5A	(1hr, 1.67V/cell, 25°C/77°F)
Max. Discharge Current	1200A (5s)	
Internal Resistance	Approx 5.0 mΩ	
Operating Temp. Range	Discharge	-15~50°C (5~122°F)
	Charge	0~40°C (32~104°F)
	Storage	-15~40°C (5~104°F)
Nominal Operating Temp. Range	25±3°C (77±5°F)	
Cycle Use	Initial Charging Current less than 45.0A. Voltage 14.4V~15.0V at 25°C(77°F)Temp. Coefficient -30mV/°C	
	Standby Use No limit on Initial Charging Current Voltage 13.5V~13.8V at 25°C(77°F)Temp. Coefficient -20mV/°C	
Capacity affected by Temperature	40°C (104°F)	103%
	25°C (77°F)	100%
	0°C (32°F)	86%
Self Discharge	CT series batteries may be stored for up to 6 months at 25°C(77°F) and then a freshening charge is required. For higher temperatures the time interval will be shorter.	



Applications

- ◆ For standard 19 inches or 23 inches power cabinets
- ◆ Network connection equipment of communication system
- ◆ Power system of special network or local area network
- ◆ UPS, standby power supply
- ◆ Power station systems
- ◆ Railway and marine systems



Constant Current Discharge (Amperes) at 25 °C (77°F)

F.V/Time	10min	15min	20min	30min	45min	1h	2h	3h	4h	5h	6h	8h	10h	20h
1.85V/cell	233.1	204.6	180.5	144.6	108.6	87.3	50.9	37.3	29.9	25.1	21.7	17.2	14.3	7.60
1.80V/cell	269.1	229.2	199.8	154.8	114.2	91.4	52.7	38.6	30.8	25.8	22.3	17.8	15.0	7.94
1.75V/cell	286.2	243.0	208.8	159.3	117.8	94.1	53.9	39.2	31.2	26.1	22.6	18.1	15.2	8.02
1.70V/cell	300.6	253.2	215.6	164.4	120.0	95.6	54.7	39.7	31.6	26.4	22.9	18.3	15.3	8.07
1.67V/cell	317.7	264.0	222.8	167.1	122.6	97.5	55.4	40.1	31.9	26.7	23.1	18.5	15.5	8.12
1.60V/cell	330.3	272.4	228.6	170.4	124.4	99.0	56.1	40.6	32.2	27.1	23.5	18.7	15.6	8.16

Constant Power Discharge (Watts/cell) at 25 °C (77°F)

F.V/Time	10min	15min	20min	30min	45min	1h	2h	3h	4h	5h	6h	8h	10h	20h
1.85V/cell	435.2	385.9	343.8	278.5	210.9	170.1	99.9	73.4	59.0	49.6	43.0	34.4	28.7	15.2
1.80V/cell	496.6	426.5	375.1	293.6	220.1	177.1	102.8	75.6	60.5	50.8	44.0	35.5	29.9	15.9
1.75V/cell	519.8	446.7	388.3	299.7	224.9	181.5	104.7	76.5	61.1	51.3	44.5	35.9	30.2	16.0
1.70V/cell	533.7	459.1	397.8	307.6	228.2	183.8	105.9	77.4	61.8	51.6	45.0	36.3	30.5	16.1
1.67V/cell	561.9	476.7	409.5	312.0	232.4	187.1	107.2	77.9	62.3	52.3	45.3	36.6	30.8	16.2
1.60V/cell	568.0	482.1	414.3	314.0	233.3	188.1	107.6	78.3	62.5	52.8	45.9	36.9	31.0	16.2

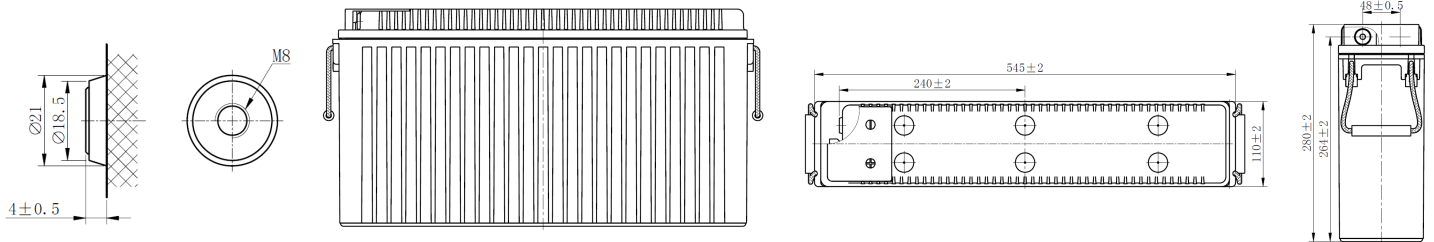
Specifications subject to change without notice.



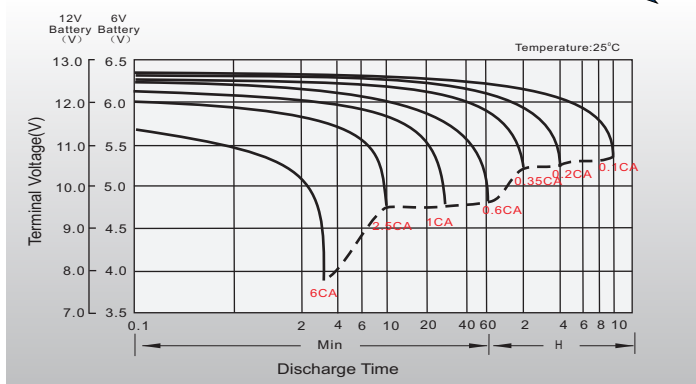
Dimensions

T13-A Terminal

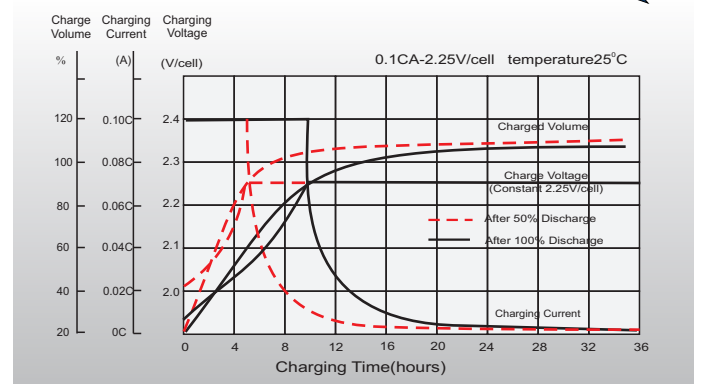
Unit: mm [inches]



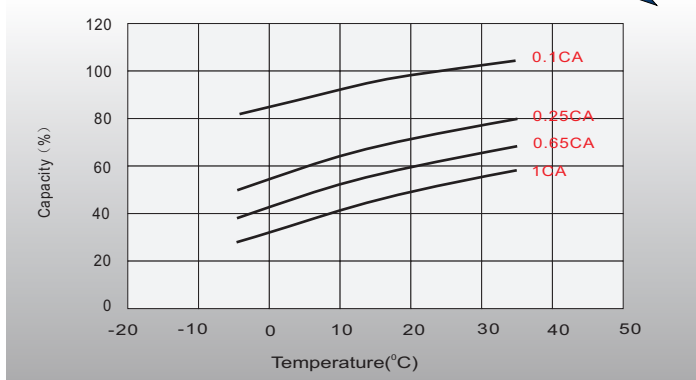
Discharge Characteristics



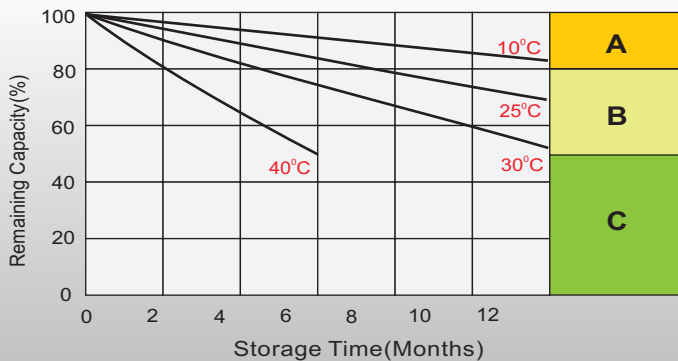
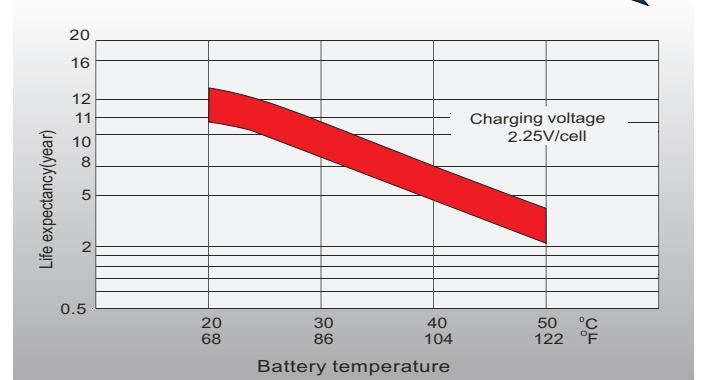
Float Charging Characteristics



Temperature Effects in Relation to Battery Capacity



Effect of Temperature on Long Term Float Life



Self Discharge Characteristics

- A** No supplementary charge required
(Carry out supplementary charge before use if 100% capacity is required.)
- B** Supplementary charge required before use. Optional charging way as below:
 1. Charged for above 3 days at limited current 0.25CA and constant volatge 2.25V/cell.
 2. Charged for above 20hours at limited current 0.25CA and constant volatge 2.45V/cell.
 3. Charged for 8~10hours at limited current 0.05CA .
- C** Supplementary charge may often fail to recover the capacity.
The battery should never be left standing till this is reached.

Sales Office

Finland and Baltics
Celltech Oy
Sinimäentie 6
02630 Espoo
Finland
TEL: +358 (0) 207 999 640
E-mail: info@celltech.fi
www.celltech.fi

Sweden
Celltech Abatel AB
Färögatan 33
164 51 Kista,
Sweden
TEL: +46 (0) 8 445 78 70
E-mail: info@celltech.se
www.celltech.se

Denmark
Celltech A/S
Lejrvej 25
3500 Vaerloese,
Denmark
TEL: +45 7025 2201
E-mail: info@celltech.dk
www.celltech.dk

Norway
Staubo Elektro-Maskin AS
Bjoernerudveien 12 C
1266 Oslo
Norway
TEL: +47 22 75 35 00
E-Mail: post@staubo.no
www.staubo.no